

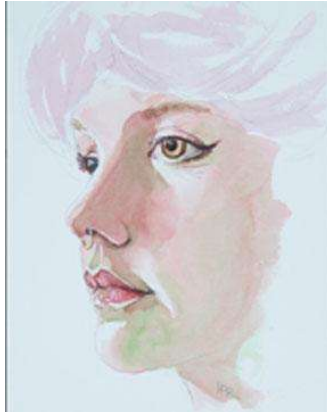


**Our Tuesday, February 22 Meeting will be
VIA ZOOM**

**The Meeting will start at 7 pm! Don't miss it!
(Join Zoom Meeting by clicking here a few minutes
before 7. *Barbara will let you in:*)**

<https://us02web.zoom.us/j/88947008262>

FEBRUARY DEMONSTRATING ARTIST PABLO RIVERA



Pablo Rivera was born in El Barrio, Spanish Harlem section of New York City, graduated from Cooper Union School of Art, attended workshops at School of Visual Arts and Educational Alliance in New York as well as workshops in Florida, Charles Reid and Mary Whyte in watercolor and Enzo Torcoletti in stone sculpture.

Rivera is a multi faceted artist, and we know him well for his beautiful award winning watercolors, portraits and drawings. He is also known as a sculptor, a photographer and a popular teacher.

Pablo will be demonstrating watercolor portraiture for the Jacksonville Watercolor Society's meeting over ZOOM.

President's Message

February 2022

Hello Members,

Another winter month has gone by and I hope you all are well. It's a difficult time for us to keep fighting off viruses. The board is working and planning hard to keep us all safe. February will be another ZOOM membership meeting.

March is planned for an in-person meeting and the really good news is that we will begin our meetings at 6:00 PM and end at 8:00 PM. This change in time will get us home earlier especially with daylight savings time beginning March 12.

Question: Do you ever go back to basics with watercolors? Basics like paying attention to brush strokes, primary colors and the many colors you can mix from them, and just stepping back to really look at your artwork. I wonder if we just paint and paint just to get a painting in the show. We might be taking our skills and talents for granted as we continue to paint away. I think our busy life doesn't help either as we probably don't have the quality paint time we would like.

Recently, I purchased Nita Leland's "Confident Color" book. When I was reading it my thoughts were "I know this stuff, I already learned it". But the red flag went up and I realized I needed a review. I didn't know I could use New Gamboge as a primary yellow. Did you? Well, throughout my review of primary colors I realized there were many reds and shades of blue that I could experiment with to make some very amazing colors to lift up my paintings.

With the Spring Show coming up very soon and it's never too early to plan for the Fall Show as well, maybe a review of primary colors might just be of interest to you. Going back to the basics I believe we find things that we missed the first time around. Like New Gamboge. I use it but not as a primary.

By the way, the JWS Library has a new donation: Nita Leland's "How to Make a Watercolor Paint Itself". In March, at our in person meeting, the library will be open for business. You might want to look at this latest donation to review your color schemes and maybe find a discovery like I did.

See you all Tuesday night, February 22nd on ZOOM. Continue reading this newsletter for more details and upcoming events. See you in person in March!

Best regards,

Chris Olmoguez
President

PLEASE PAY YOUR DUES

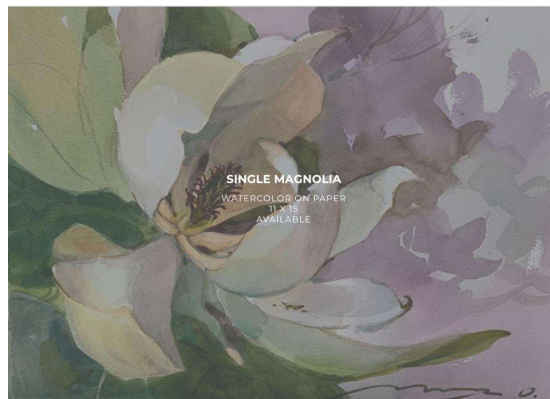
- \$35 JWS dues are DUE January 1.
- Many members have not paid yet!
- **Membership Dues DUE DATE has been extended to February 28** because COVID prevented January face to face reminder/acceptance of dues..(Your dues must be paid to enter the Show.)



- Only dues-paid members may enter shows.
- JWS members can renew by clicking here to pay dues:

[JWS MEMBERSHIP](#)

February Demonstration Mary O. Smith



Mary O.'s demonstration last month put a new twist on plein air painting, as she applied her outdoor painting techniques to an indoor/on-line demonstration. The process was particularly interesting as she distilled the primary element--a large, moss draped tree--from a 4" x 6" photo of a swamp. This wonderful skill is particularly useful when painting outdoors!

So often as artists we fail to get ourselves OUT of the details when we attempt to achieve a realistic view! Then we may end up obscuring the very thing we wish to showcase.

Mary's approach emphasizes the need to think clearly about the critical areas which must be included, and the equally critical areas which must be *left out*. With that very difficult thinking out of the way, Mary proved we can quickly find that beautiful tree in our watercolors.



JACKSONVILLE WATERCOLOR SOCIETY SPRING SHOW

- This year's Spring Show will be gallery-judged by our **Spring Workshop Instructing Artist: Michael Holter.**

- We will continue to use the Jacksonville Watercolor Society website's **ON-LINE ENTRY SYSTEM** for artists to submit their work in advance of TAKE-IN. **Online submission dates: March 13-16.**
- **YOU MUST HAVE PAID YOUR DUES BY FEBRUARY 28 TO ENTER THE SHOW!**
- You will need to submit a photo of your entry painting during on-line entry, but the fact that we have an on-site judge should ease member concerns about the quality of your digital images.
- If you have problems with entry photos or payments, contact Fran Grandy, Barbara Holt or Chris Olmoguez. Our phone numbers are on the last page of this newsletter. We think we can resolve any issues!
- The Spring Show will display in **two** galleries this year, Westminster Woods and the Jewish Community Alliance.
- Due to the size of the galleries and contagiousness of COVID, we are unable to host a Show Opening this Spring. We feel that the two site options (Westminster Woods and JCA) and varying hours provided will allow members and the public additional opportunities for viewing. **See the show at either or both location(s)! Both galleries should be open 9am-4pm (though JCA is open only 1-6 on Saturday. If you are an early-bird, the JCA opens Monday -Thursday at 5:30 a.m.--suggest you call first).**

**TAKE-IN, DROP-OFF WILL BE AT WESTMINSTER
WOODS GALLERY (JULINGTON CREEK),
MARCH 18, 10 AM-1 PM**

**THE JURIED SHOW WILL MOVE TO THE JEWISH
COMMUNITY ALLIANCE GALLERY ON MARCH 31ST
8505 SAN JOSE BLVD.
904 730-2100**

The JCA Gallery is small, so, for this show only, we must restrict the framed size of our paintings:

- ***Smallest acceptable size framed/matted: 12' BY 12'***
- ***Largest acceptable size framed/matted: 28" on longest side.***

The small JCA Gallery maintains crowd size controls while COVID continues to be an issue.

**PAINTING PICKUP FROM JCA
APRIL 27, 10 A.M.-1 P.M.**

As always, if you are unable to pick up your work, please contact a JWS friend who can help!

**SPRING WORKSHOP:
MICHAEL HOLTER
MARCH 23-25**

Three lucky JWS members can still find spaces in Michael Holter's Spring Workshop. (Enroll on the JWS website.)

This workshop will focus on the use of watercolor to paint exciting impressionistic paintings.

You paint from photographs and will explore the use of light and shadow to create interesting compositions and achieve dynamic results. We will examine the fundamentals of watercolor painting to assure that all students are familiar with the techniques.

Daily discussions and application of the principles and elements of design will be woven into your painting experience. Michael will demonstrate his approach to creating paintings of people and also landscapes/cityscapes.



[CLICK THIS LINK TO REGISTER FOR MICHAEL'S WORKSHOP](#)

LOOKING AHEAD TO THE FUTURE THE FALL WORKSHOP

Quick Sketch Watercolor Portraits

Pam Wenger

October 26, 27, 28

The 3 day format of the workshop will give time to practice the techniques we are exploring. The references we'll be working with will cover a wide range of ages and skin tones. This workshop will be a combination of demo and hands-on portrait work.* During Days 1 and 2, you will primarily work from partially pre-drawn portraits that will be provided in the class. You will finish the drawings, but the basics will be there so we can spend the majority of our time painting. On day 3, we will work on one or two portraits of your own that you have prepared for the class. (on approximately 9"x11" paper, head only).



JWS Board

President

Christine Olmoguez

662-5614

Secretary	Tuni Weiss	540-4040
Treasurer	Gail Karson	61-313-9560
Co-VP-Shows	Barbara Holt	904-874-4916
Co-VP-Shows	R. Tuni Weiss	540-4040
Co-VP Programs	Sherry Black	917-716-4620
Co-VP Programs	Katherine Ryan	568-7501
VP-Membership	LuAnn Dunkinson	904-572-2828
VP-Communications	Fran Grandy	247-7988
VP –Workshops	Karen Zelenkov	287-5411
Library	Janet Killackey	992-7293
Newsletter	Fran Grandy	247-7988
Publicity	Carol Doyle	553-1172

[Text Link](#)

Membership Application

JWS Membership Application

NAME _____
 ADDRESS _____
 CITY _____ ST _____ ZIP _____
 TEL _____
 E-MAIL _____

MEMBERSHIP CATEGORIES:

New Member Renewing Member
 Individual \$35 Family \$42 Student \$20
 I'd like to volunteer

Membership is open to those interested in water media
 A student must be a full-time high school or college student with I.D.

Current annual dues are \$35.00 per year and are due Jan 1st
 Please Mail Application with Check Payable to JWS to:

LuAnn Dunkinson
 3894 St Johns Avenue
 Jacksonville, FL 32205

Jax. Watercolor Society | c/o Fran Grandy, 370 Garden Lane, Atlantic Beach, FL 32233

[Unsubscribe {recipient's email}](#)

[Constant Contact Data Notice](#)

Sent by frangrandy@gmail.com powered by



Try email marketing for free today!